

*Welcome to the everchanging,
the fluid and the free*

A moment of calm

Listen to the quiet.

The silence before the sound.
Between the now and the after.
A space where you can retreat.
Escaping back to nature.
Leaving the world behind.

A moment of calm.
Allowing yourself
to be exactly who you are,
live how you desire
and love who you want to love.

Welcome to the ever-changing,
the fluid and the free.







In the everchanging natural landscape and flow of life, we move, we change, and we grow. We thrive and reflect in surroundings of peace and beauty, finding new inspiration, creativity and energy for embracing yet another day.

Our collection is inspired by the vivid Scandinavian nature that surrounds us with the changing seasons, comforting earth-toned colours, crafted details and natural materials. All designed to create calm, luxurious and beautiful spaces.

We believe that good design is not just what meets our eyes, but just as importantly how it makes us feel.

Every product is designed to last for generations and is made by hand by some of Europe's finest manufacturers. Crafted from nature's grand materials with the beautiful changing seasons as captivating backdrops. Bringing sustainability, natural materials, calmness and brightness into our homes, our workspaces and our lives.

New Scandinavian Design



Aya Modular Sofa in Revi, Beige. Designed by Says Who.
Soul Lounge Chair. Designed by Hertel & Klarhoefer.
Island Coffee Table. Designed by Umit Caglar.





Zen Rug Series
Designed by *Emily Broom*

The Zen Rug series is a 2020 Bolia Design Awards winner. The rugs came to life as a result of a period when our normal, fast-paced lives were flipped upside down, positively resulting in many of us spending our waking hours in the confines of our homes.

Just like old Japanese Zen gardens are intended to represent the various calming elements in nature and aid in contemplation and meditation, the Zen Rug series has been created to bring a grounding foundation to our homes and improve the everyday life through simple tactile forms and soft, sustainable materials. The Zen rug offers a grounded and quiet stand-still where we can pause our fast-paced lives. At least for a moment.

With a focus on good quality design, clean uncluttered lines, the use of natural materials and best possible craftsmanship, the Zen rug series in turn leads to a design that will last and age gracefully. The colour scale is like taking on a journey through some of the typical elements found in Scandinavia's natural environment: Sand, Pebbles, Moss and Water. These are also the key elements that form the foundations for most Zen gardens and the inspiration for the overall Zen Rug series.









Link Table, Designed by *Glismand & Rüdiger*. Palm Chair, Designed by *Says Who*.
Reflection Pendant, Designed by *Asger Risborg Jakobsen*.



We collaborate with a brilliant collective of world-renowned designers – from upcoming, vibrant talents to established design studios. And no matter where in the world our designers live and breathe, they all share the same passion for New Scandinavian Design.

Like the seasons, our collective of designers are not afraid of change. They share a common passion for natural materials, sustainable solutions and New Scandinavian Design.

The seasons, the colours, the raw materials and the tactility. Everything captured, tailored and perfected by hand and turned into beautiful, timeless designs that speak to your senses and invite you to touch, feel and fall in love.

We believe that new, fresh talent is the future of our business, and that creativity thrives on diversity, curiosity, sharing and collaboration. That is why we give back to every new generation and honour the brightest talents at our annual Bolia Design Awards. A wonderful tradition we established more than 14 years ago, and still hold dearly.

Here, we celebrate new, emerging design talents and give them the opportunity to introduce their designs to the world – and all the way into your home. Together, we put creativity at the heart of everything we do to create the next chapter of Scandinavian Design.

Our designers





Elton Sofa Series
Designed by *Glismand & Rüdiger*

A powerfully timeless silhouette, echoing the legacy and careful craftsmanship of the Scandinavian design tradition. The Elton series comprises of elegant sofas, poufs and daybeds, all characterized by a slim frame, handcrafted in solid wood, gracefully elevating the softly inviting seat, and is conceived by the Danish design duo Glismand & Rüdiger.

For the designers, Scandinavian design is not a branding label, but a commitment. Something to be interpreted in contemporary ways, and something to be proudly honoured. Sustainability is the starting point for the development of all new designs, all the way from the first sketches to the final product. Resulting in beautiful furniture pieces that are built to last – beyond trends.

Elton echoes Scandinavian design. With its clean silhouette, surrounded by the handcrafted wooden frame and soft cushions, Elton rises above the ground, allowing every tailored component and crafted detail to be exposed in its honest and clean form. The light 30mm solid wooden frame seems to almost float, elevated by the soft and inviting cushions.

You may dress your Elton in any of our beautifully durable fabrics, all of which are OEKO-TEX® Standard 100 certified, and many are sustainably produced, using recycled materials or plastic waste from the ocean. As your Elton ages over time, most components in the design can be replaced, if needed. Truly a long-lasting companion, both by its timeless aesthetic and by its handcrafted quality.









Elton 3 seater Sofa in Soil, Sand. Designed by *Glismann & Rüdiger*.
Elton Daybed in Soil, Sand. Designed by *Glismann & Rüdiger*.
Berlin Coffee Table. Designed by *Hertel & Klarhoefer*.
Orb Pendants. Designed by *365° North*.











Nord Table. Designed by *Glismand & Rüdiger*. Apelle Chair. Designed by *Busetti Garuti Redaelli*.
Orb Pendant. Designed by *365° North*. Scandinavia Rug. Designed by *Bolia Design Team*.







We are more passionate, conscious and selective consumers than ever before. We look for quality, craft and timeless designs in our search for items that will last for many years. We love clever and sustainable solutions, and we hurt when resources go to waste.

We all want to get the most out of our lives, so we are increasingly aware of how we can optimize our mind, our body, our health and our well-being, through prioritizing focus on the food we eat, the choices we make, the people we meet, the stuff we buy and the environment and surroundings where we live and work.

Honesty, substance and longevity are topics that form the core of our decisions when we shop everything from fresh food to customised sofas. This is amazing news – as we're all slowly changing our consumption, buying fewer, but better products.

Natural materials, sustainability and longevity is the starting point of every Bolia design. All the way from the first sketches to the final product, our designers are making sustainable decisions and creating beautiful designs that are built to last for many years.

Our furniture designs are customized and made by hand which is a luxury that represents a more conscious choice. It provides both a hand-crafted quality, it expresses a personal identity, and it sends a subtle signal against mass-production.

Our new home accessory collection is made from ceramics or clear, structured, sanded or toned glass and crafted by hand, making each piece unique, tactile and delicate.

Even our product warranty is changing for the better, as we now give a 10-year warranty for every single design in our collection.

A change to something better







Recover sofa in Revi, Ivory. Designed by *Glismand & Rüdiger*. Berlin Coffee Table. Designed by *Hertel & Klarhoefer*.
Palm Lounge Chair with armrest. Designed by *Says Who*.







Cord Series
 Designed by *Hertel & Klarhoefer*

Cord is a series of exquisitely crafted sideboards and high boards, designed by the Berlin-based studio Hertel & Klarhoefer, and made by hand in solid oak. The designers find their inspiration mainly in the natural materiality of things, which is very evident in the Cord series, by the beautiful contrast between the solid oak frame and a delicately airy, woven cord front.

The special paper cord is developed and produced in the small Danish town of Randers, by Danish Cord, and adds another layer of elegant craftsmanship to the design. Storage that gently hides away your clutter, while adding an element of tactile materiality to any space.









Scandinavia 3 Seater Sofa in Nantes, Light Beige. Designed by *Glismand & Rüdiger*.
Story Coffee Table. Designed by *Anna Karnov & Clara Mahler*.

Story Series

Designed by *Anna Karnov & Clara Mahler*

The Story series is a beautiful reinterpretation of side-, coffee-, and bar tables in FSC®-certified wood that tells a captivating story of creative craftsmanship and distinctive design language. The airy front composed of repeated shapes in robust oak, subtly hides the beautiful truisms of everyday life behind the appearance of an aesthetic wooden railing. The designers behind Story, Anna Karnov & Clara Mahler, intended to create a design with a durable quality that ages gracefully while continuously accommodating to changing wishes and needs. A design that channels its Scandinavian simplicity in a harmonious new interpretation, uniting function, format and aesthetics in an effortless and elegant way.











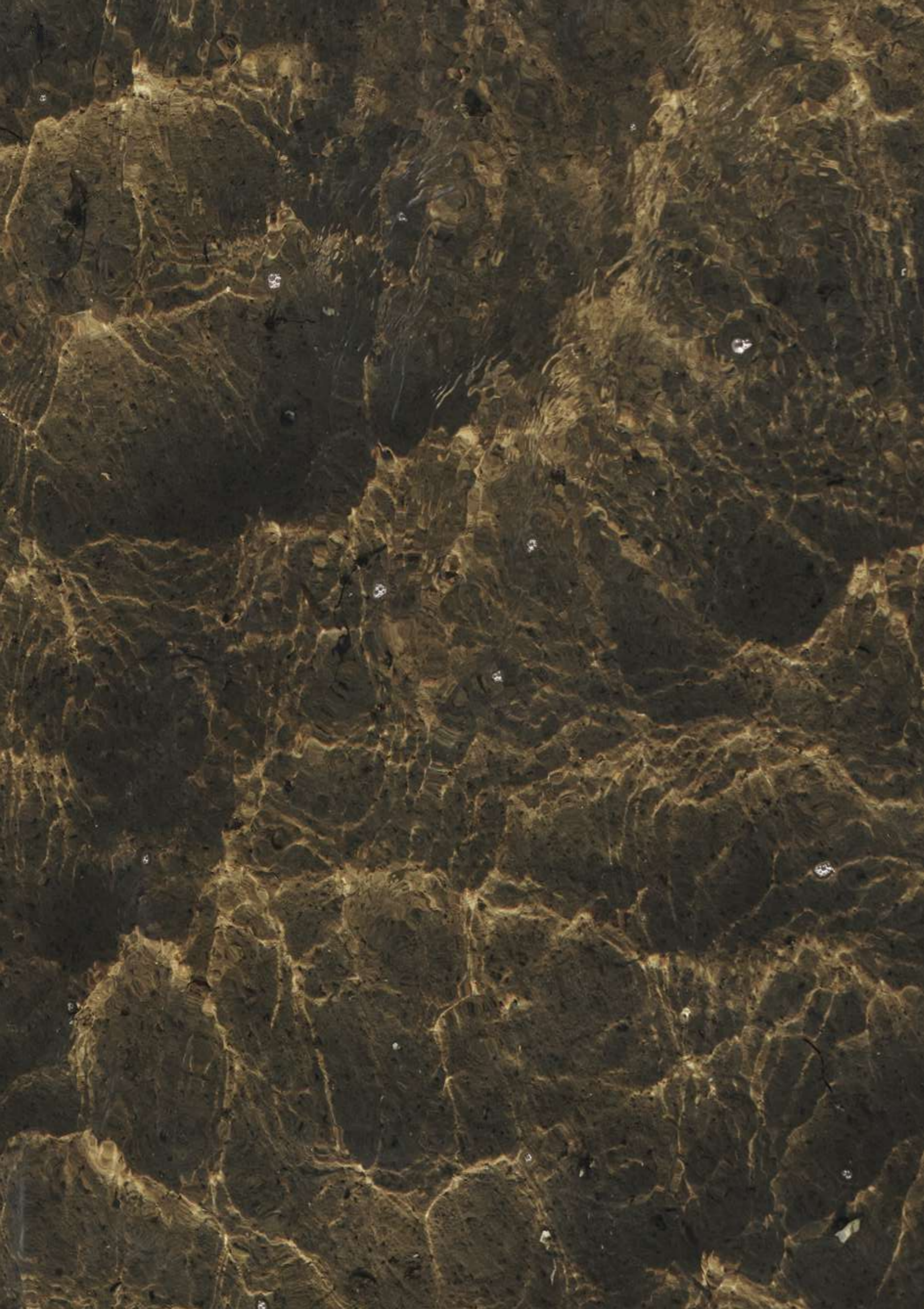
Elton Daybed. Designed by Glismand & Rüdiger.





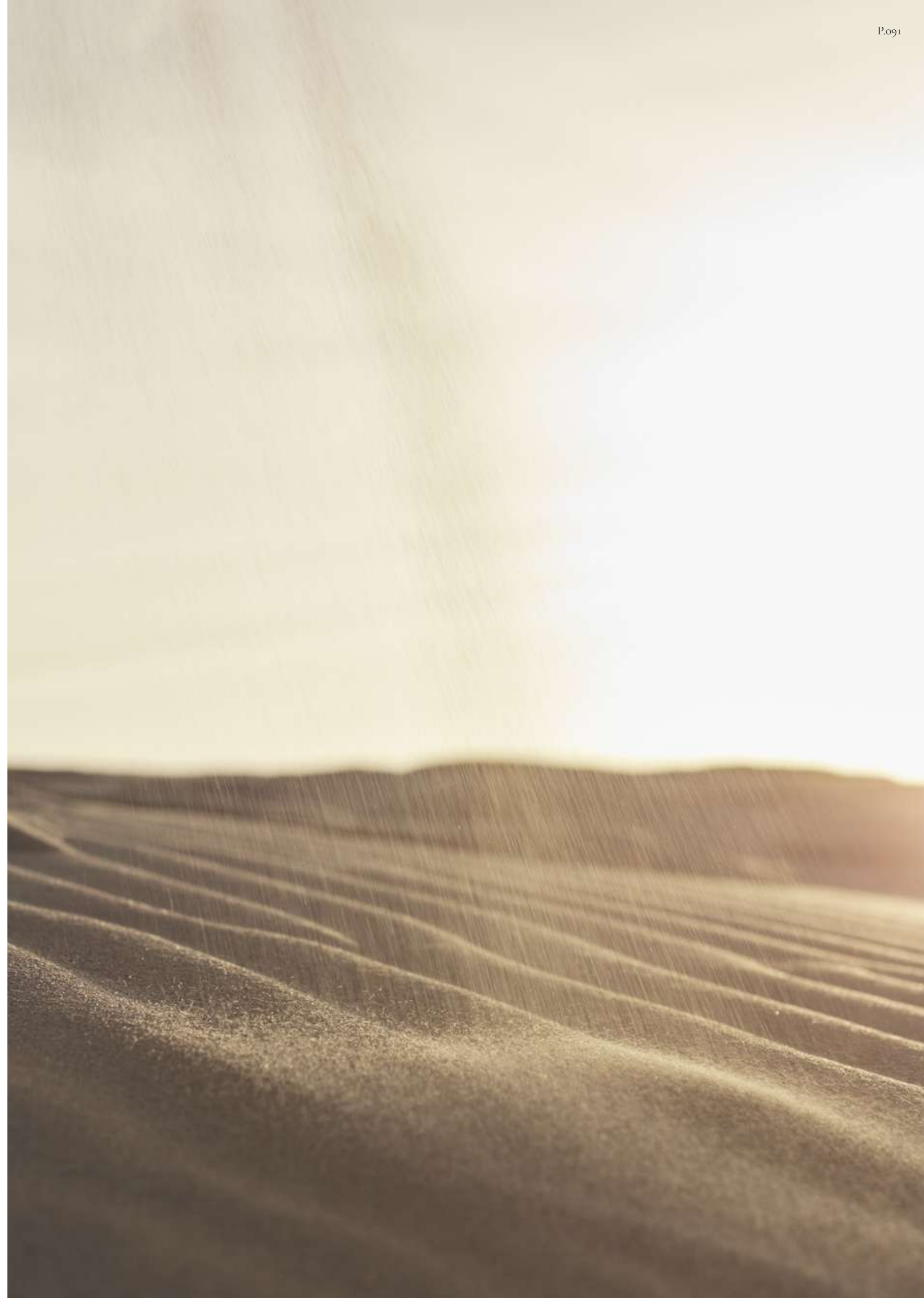
Cosy Modular Sofa in Baize, Sand. Designed by Glismand & Rüdiger.
Latch Coffee Table. Designed by Dazingfeelsgood.













Cana Storage Series
 Designed by *Steffensen & Würtz*

Every design in the Cana series is made in beautiful, FSC®-certified oak with a distinctive detail of intricate wicker decorating the drawers. The combination of the two naturally tactile materials brings out an iconic, bright and calm appearance for showing off all your favourite things. Either in plain sight behind the glass doors or slightly hidden away behind the airy wicker fronts.



The designers have found inspiration in the Danish seaside hotels' characteristic, tranquil atmosphere, where peacefulness and authenticity create a very special and calm feeling. The transparent and airy expression reinforces this source of inspiration and is a beautiful reminder to keep rooms simple, calm and luxurious in both function and appearance.



Noora Modular Sofa in Vilme, Beige. Designed by *Bolia Design Team*. Graceful Coffee Table. Designed by *Michael H. Nielsen*. Campa Table Lamp & Floor Lamp. Designed by *Spant Studio*.







Node Table. Designed by *kaschkasch*.
Seed Chair in Revi, Dark Beige. Designed by *Hans Thyge & Co.*
Torch Vases. Designed by *Büro Famos*.





North 3 Seater Sofa with Chaise Longue in Revi, Dark Beige. Designed by Glismann & Rüdiger.
Berlin Coffee Table. Designed by Hertel & Klarhoefer. Orb Floor Lamp & Lounge Pendant. Designed by 365° North.



Lomi Sofa Series
Designed by *Meike Harde*

A beautiful combination of distinctive lounge aesthetics and the rigorous Scandinavian design universe. Lomi is a series of sofas and poufs designed by German Meike Harde with a robust interior in FSC®-certified wood, beautifully embraced by soft inviting cushions and your favourite sustainable fabric. Its stringent legs and frame are precisely positioned to add a touch of elegance and lightness, while the more characteristic shapes and features enhance Lomi's exclusive craftsmanship qualities. A beautiful, timeless design that will follow you for many years.





Lomi 3 Seater Sofa in Pure, Sand. Designed by *Meike Harde*. Plateau Coffee Table. Designed by *Büro Famos*.
Philippa Armchair in Vella, Dark Brown. Designed by *Busetti Garuti Redaelli*.

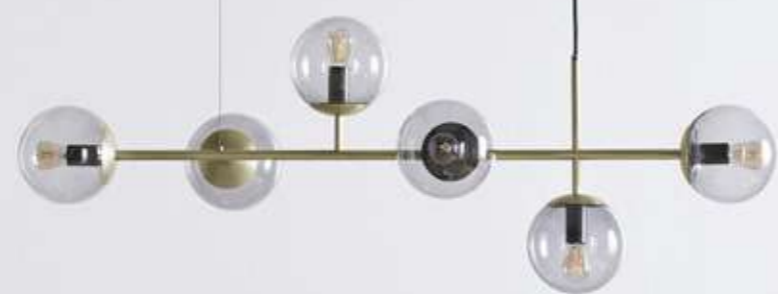


Strap Shelving System. Designed by *Tine Ottesen Stride*.
Swing Chair. Designed by *Henrik Sørig Thomsen*.









Hill Table. Designed by *kaschkasch*.
Dine Dining Sofa 3 seater in Revi, Dark Beige. Designed by *Hertel & Klarhoefer*.
Case Storage System. Designed by *OOOJA*. Sleek Chair. Designed by *Says Who*.







Ripple Mirror. Designed by Büro Famos.



Caisa Modular Sofa in Ascot, Beige. Designed by Böttcher & Kayser.
Berlin Coffee Table and Bench. Designed by Hertel & Klarhoefer.





Frame Table. Designed by *Metrica*. Kimono Chair in Pure, Beige Designed by *Pascal Bosetti*.
Cord Sideboard. Designed by *Hertel & Klarhoefer*. Balloon Pendants. Designed by *Meike Harde*.







Turned Table. Designed by *Bolia Design Team*.
Swing Chair. Designed by *Henrik Sørig Thomsen*.





Cosima Modular Sofa
Designed by *kaschkasch*

Soft, embracing and spacious enough for any sized dream to grow and flourish. The Cosima modular sofa series is characterized by its extra seat depth and low arm and backrests, which invites you to slow down, sit back and breathe, while comfortably knowing that your sofa is thoughtfully crafted from natural materials, and made to last.

Designed by the Cologne-based design studio *kaschkasch*, the Cosima sofa combines functional, German design with Scandinavian comfort and simplicity. The duo strives to create beautifully intuitive, uncomplicated design – simple shapes and clean lines, that possess a poetic expression. On the inside, Cosima is built by hand in wood, and filled with real down that is sewn in channels to extend the durability and shape.

On the outside, the look and feel is up to you. Designed by you, for you, as you combine and arrange any modules you need, and decide upon the fabric or leather from our sustainable collection that best suits your lifestyle and aesthetic. And Cosima modules can be rearranged, added or removed over time, as life presents you with new needs and possibilities.





Cosima Modular Sofa in Baize, Sand. Designed by *kaschkasch*.
Mix Coffee Table. Designed by *Studio Gud*.





In a fast-paced every day, we seek for balance and peaceful sanctuaries. We thrive in beautiful breathing spaces, where we can reload and connect with nature and allow ourselves to be exactly who we are, live how we desire and love who we want to love.

When spring flourishes all around, we seek for the returning light. Fresh and powerful with an inspirational energy that paths the way for new possibilities. And new greeneries are made – in colours everyone has longed for, creating that calming, stimulating sensation. A fresh, minimalist expression with green and beige colours. Linen, wind, sky and fields of corn.

In the dry heat of summer, we exhale and recharge, softly caressed by the warm breeze and the humming and buzzing all around. We sway along in the white light – with a soft rain slowly washing the brightest colours to subtle pastels. A bright and luxurious expression supporting a slow and calming feel. Beach, sand and sun with subtle rose notes.

When autumn shows up with its dazzling, burnt palette, we move closer together in calm hibernating spaces. Appreciating the misty air and the fading sunlight – as the hazy days enters centre stage. A calm colour scale with warmer and coordinated colours and crafted details. Wood, wind, clay, dark green and burnt brown notes.

During Winter, delicate ice flowers appear – frosted and sparkling, while nature holds its breath. Silver flakes are falling softly past the glow of starlight. An elegant expression in grey and ice blue tones with references to snow, cosiness, coffee and bonfire.

Inviting nature inside





Aya Modular Sofa in Monza, Sea Green. Designed by Says Who.
Campa Floor Lamp. Designed by Spant Studio.







Friedman Shelving System. Designed by *Adam Friedman*.



Friedman Shelving System
Designed by *Adam Friedman*

A beautifully modular shelving system, created by the American designer, Adam Friedman. An intuitive way to organize your storage, designed in a spontaneous moment as a functional need became an aesthetic manifestation. The flexible shelving system is crafted in FSC®-certified wood and has a finely detailed, yet uncomplicated, design language that creates an inviting and flexible expression in the home. The perfect storage system for a warm, modern home.









Every product in our collection is designed to last and is made by hand by some of Europe's finest manufacturers and crafted from nature's grand materials with the beautiful changing seasons as captivating backdrops.

Luscious solid oak, walnut and ash – natural, oiled or stained. Everything is FSC®-certified, securing a sustainable foresting and good working conditions, from the woods to the final design.

Also, there is nothing more soothing than tactile furniture fabrics such as linen, bouclé, wool, velvet or chunky woven fabrics. Whatever you chose, you can be certain that every single fabric is certified according to STANDARD 100 by OEKO-TEX® and produced without any harmful substances. All furniture leathers we use are not only from the world's finest quality but are also traceable, securing transparency and animal welfare.

We love using brass and untreated, stainless or lacquered steel to create beautiful contrasts with natural stones such as Italian marble and travertine or polished concrete.

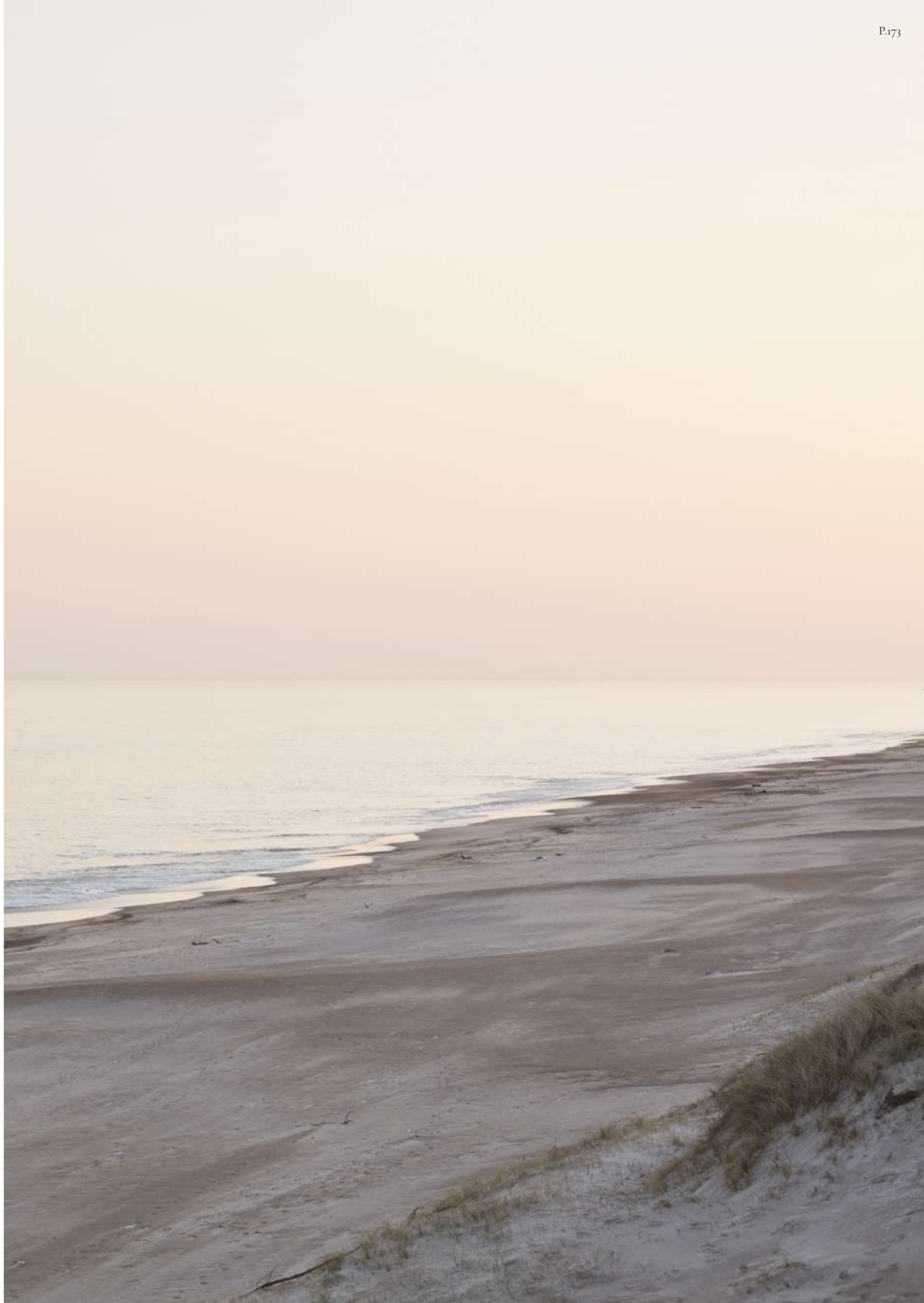
All our natural rugs are handmade and Care & Fair certified, securing proper working and living conditions for the workers and their families.

Natural materials such as hemp, cork or the lovely paper braid we love to use in many of our designs as a clear reference to our Scandinavian heritage and craftsmanship.

Natural materials









Link Table. Designed by *Glismand & Rüdiger*.
Palm Chair in Baize, Sand. Designed by *Says Who*.
Frank Dining Sofa in London, Light Beige. Designed by *E-ggs*.





Elton 3 1/2 seater Sofa with Chaise Longue in Ascot, Beige. Designed by *Glismand & Rüdiger*.
Mix Coffee Tables. Designed by *Studio Gud*.







Torch Vase. Designed by Büro Famos.







Sepia Sofa 3 Seater in Soil, Sand. Designed by *Glismund & Rüdiger*.
 Soul Lounge Chair. Designed by *Hertel & Klarhoefer*.
 Latch Coffee Table. Designed by *Dazingfeelsgood*.
 Leaves Pendant. Designed by *Kateryna Sokolova*.

Forma Vase. Designed by *Ferriani Sbolgi*.
Forest Side Table. Designed by *Pavel Vetrov*.







Orlando Outdoor O2 Modular Sofa. Designed by *Glismand & Rüdiger*.
Calm Poufs in Ocean, Light Grey. Designed by *Ferriani Sbolgi*.









Graceful Table Series
Designed by *Michael H. Nielsen*

The Graceful series is made to last for years. Or maybe even a lifetime. It's a beautiful series of dining tables and desks, designed by Danish Michael H. Nielsen in nature's favourite and most durable materials. Characterised by sleek, stringent lines and solid wood that invites you to feel its fine natural structures.

With his inquisitive nature and creative approach to design, materials and sustainability, Michael H. Nielsen created the Graceful series based on a 'less is more' principle. Details are kept to the bare minimum, allowing each design to speak its very own distinctive language. All tables in the series, ranging from desks, dining table to coffee tables are crafted in beautiful FSC®-certified wood with a characteristic, unbroken surface, underlining the natural features and aesthetics of the design.

A timeless and elegant interpretation of our Scandinavian design heritage that tells a story of great craftsmanship and most importantly – longevity.





Graceful Table. Designed by Michael H. Nielsen.
Swing Chair. Designed by Henrik Sorig Thomsen.
Campa Lamp Series. Designed by Spant Studio.
Forma Tableware Series. Designed by Ferriani Sbolgi.



Graceful Desk. Designed by *Michael H. Nielsen*.
Swing Chair. Designed by *Henrik Sørig Thomsen*.
Reflection Table Lamp. Designed by *Asger Risborg Jakobsen*.

Campa Lamp Series
Designed by *Spant Studio*

The Campa series is best described as classic Scandinavian design, taking shape in beautiful timeless lamps. The Danish design studio, Spant Studio, is behind the elegant design that was originally inspired by the idea of creating a characterful lamp, using only a minority of components.

Each lamp in the series take complete ownership of its own signature, while the distinctiveness of the design subtly echoes throughout all versions. The light source and material of the lampshade have been carefully selected to do just that. The shade is made of beautiful, matte opal glass, which creates a calming, almost dream-like atmosphere with its soft furrows and discrete, but classic shape.

The carefully curated combination of materials makes the series stand out in its own subtle way, while the downward light of the lampshade calms the eye and mind.













Pira 2.5 Seater Sofa Bed in Ascot, Light Grey. Designed by Joa Herrenknecht.
Plateau Coffee Table. Designed by Büro Famos.



Una Vase Series. Designed by *Kateryna Sokolova*.



Node Dining Table. Designed by *kaschkasch*. Pleat Chair in Baize, Sand. Designed by *Steffensen & Würtz*. Pleat Dining Sofa in Baize, Sand. Designed by *Steffensen & Würtz*. Clinkers Highboard. Designed by *OOOJA*.











Lomi Corner Sofa in Ascot, Light Grey. Designed by *Meike Harde*. Como Coffee Table. Designed by *Glismand & Rüdiger*.
Orb Floor Lamp. Designed by *365° North*. Bramble Vase. Designed by *Design Studio NIRUK*.











Hannah 6 seater Sofa with Open end in London, Light Beige. Designed by *Bolia Design Team*.
Cosh Armchair in Vella, Dark Brown. Designed by *Kateryna Sokolova*.

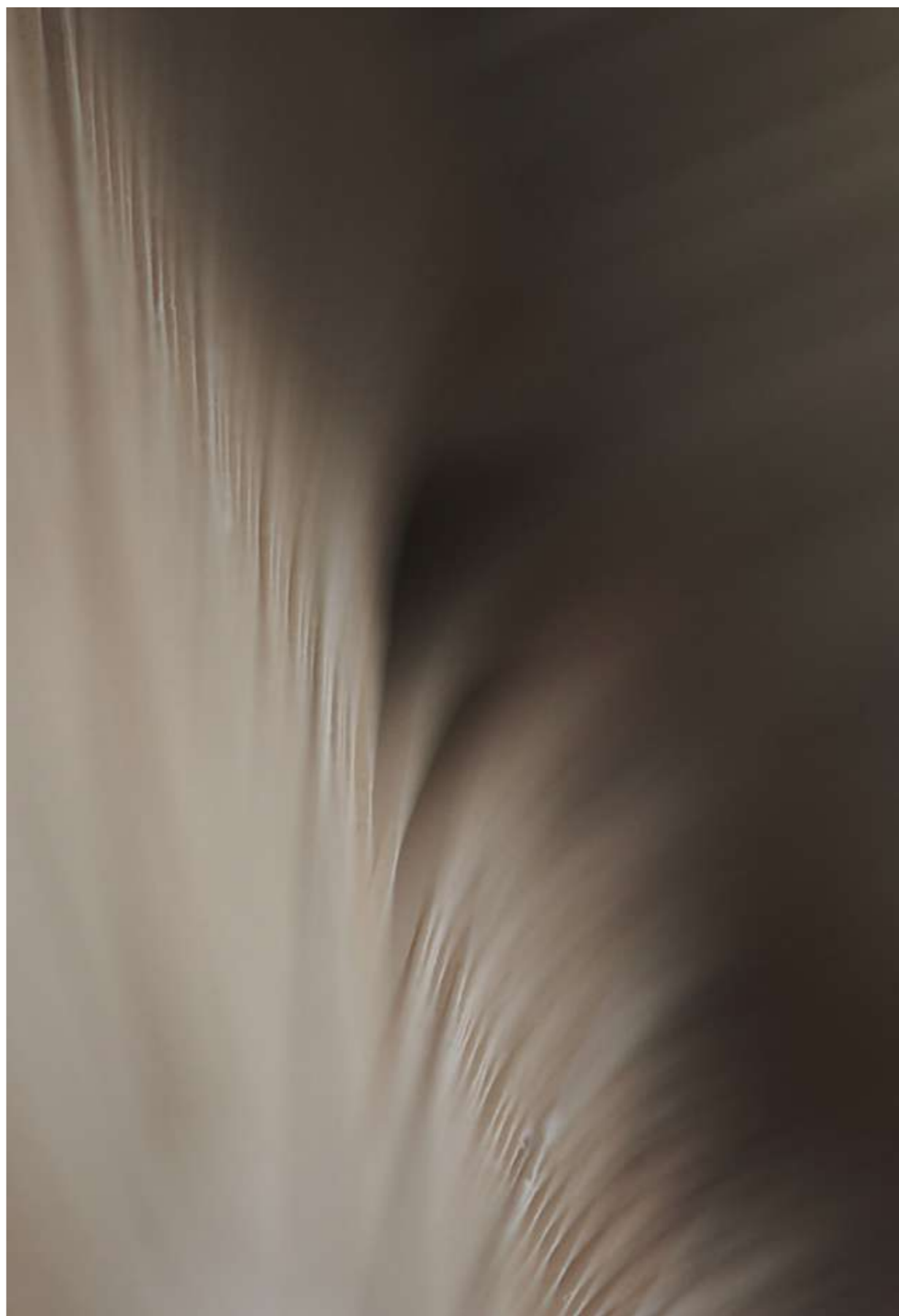






Nord Table. Designed by Glismand & Rüdiger. Dine Dining Sofa in Revi, Dark Beige. Designed by Hertel & Klarhojfer.
Chicago Chair. Designed by Bolia Design Team. Orb Pendant. Designed by 365° North.







Alp Table & Bench. Designed by *Ramos Bassols*. Palm Chair with Armrests. Designed by *Says Who*.
Piper Lounge Pendant 5-arms. Designed by *365° North*.





Rheolog Carafe Series. Designed by JüngerKühn.



As the world changes and technology brings us new possibilities to meet and connect, we search for meaningfulness, flexibility and freedom, as our work life is becoming more fluid and exciting. It calls for new perspectives on how we organize, how we work, and how we share our creativity. Welcome to the new ways of working.

It is about softening the fixed structures – letting brand values flourish and bringing the inspiration and comfort from our homes into every corner of our workspace. It's about making room for creativity, individuality and cross border teamwork – breaking down the invisible silos and the formal department structures.

We all have important voices, and we share our knowledge and ideas to improve our work – and our world. And reimagining our work life will bring more meaning and balance to our lives and more sustainable results to our business.

Our professional collection is designed for new ways of working, liberating creativity and changing a grey office into a green office. It is the ideal choice for the professional workspace, the designer restaurant, the luxury hotel, for the workspace at home and everywhere in between. The possibilities are endless.

Our designs are being tested to the world's highest quality compliance such as BIFMA and EN Standards – in collaboration with Danish Technological Institute and Bureau Veritas in Germany, the world's leading quality certification agency. And every single design comes with a 10-year warranty.

Make a workspace revolution. Create an inspiring space designed for creativity, flexibility, fun, togetherness and productivity. Can you feel it? The inspiration and the new amazing business possibilities.

The Professional Collection





Link Table. Designed by *Glismand & Rüdiger*. Palm Chair with wheels in Baize, Grey. Designed by *Says Who*.
Madison Daybed in Memory, Grey-White. Designed by *Glismand & Rüdiger*.



Reflection Lamp. Designed by Asger Risborg Jakobsen.



Link Table, Designed by *Glismand & Rüdiger*.
Kimono Chair in Mira, Ivory, Designed by *Pascal Bosetti*.
Reflection Pendant, Designed by *Asger Risborg Jacobsen*.



Reflection Lamp Series
Designed by *Asger Risborg Jacobsen*

Reflection is a series of classic, elegant lamps that embrace the beauty of simplicity, by emphasizing the most basic features of light. The Danish designer Asger Risborg Jacobsen has created Reflection by separating two main components, the light source and the shadow, which creates a beautiful reflection and a playful expression from the shadow's interaction with the soft light source.

The design language is stunningly reinforced by the elegant choice of aluminium materials in various, beautiful lacquers, designed to add a classic touch to the space its placed in. A lamp series designed to outlast fleeting trends and tendencies with its very own characteristic contemporaneity.







Graceful Dining Table and Connection Leaf. Designed by *Michael H. Nielsen*. Palm Chair in Baize, Grey. Designed by *Says Who*.
Facet Bar Stool. Designed by *Allan Noddebo*. Orb Pendants and Lounge Pendant. Designed by *365° North*.









Link Table. Designed by *Glismand & Rüdiger*.
Seed Chair. Designed by *Hans Thyge & Co*.
Orb Pendants. Designed by *365° North*.
Rheolog Carafe Series. Designed by *JüngerKühn*.







Orb Pendants. Designed by 365° North.
Seed Chair. Designed by Hans Thye & Co.







Cloud 3 seater Sofa in Ascot, Beige. Designed by Yonoh Creative Studio.
Cloud Armchair in Ascot, Ivory. Designed by Yonoh Creative Studio.
Mix Coffee Table. Designed by Studio Gud.





Fuuga Nesting Armchair in Memory Grey-White. Designed by *Busetti Garuti Redaelli*.
Berlin Coffee Table. Designed by *Hertel & Klarhoefer*. Orb Lounge Pendants. Designed by *365° North*.





Turned Table, Designed by Bolia Design Team.
Swing Chair, Designed by Henrik Sorig Thomsen.



Maiko Pendants. Designed by *Denis Guidone Design*.
 Forma Tableware Series. Designed by *Ferriani Sbolgi*.
 Arcs Tableware Series. Designed by *Büro Famos*.
 Carved Cutlery. Designed by *Yonoh Creative Studio*.









A tribute to all the creative designers behind the collection

Hertel & Klarhoefer, *Germany*
Buseti Garuti Redaelli, *Italy*
Yonoh Creative Studio, *Spain*
Glismand & Rüdiger, *Denmark*
kaschkasch, *Germany*
Michael H. Nielsen, *Denmark*
Oliver Schick, *Germany*
Ferriani Sbolgi, *Italy*
Meike Harde, *Germany*
Henrik S. Thomsen, *Denmark*
365° North, *Denmark*
Büro Famos, *Germany*
Steffensen & Würtz, *Denmark*
Ramos Bassols, *Spain*
Jüngerkuhn, *Germany*
BÖTTCHER & KAYSER, *Germany*
Asger Risborg Jakobsen, *Denmark*
Hans Thyge & Co., *Denmark*
Adam Friedman, *USA*
Joa Herrenknecht, *Germany*
Nooi, *Italy*

And many, many more creative friends.

Photography *Anders Schønnemann*
Styling *Christine Rudolph*
Art Direction and Design *Uncle Grey*

